



PRIME POWDER

To help set your makeup and bar shine and caking, make Cover Girl Professional Loose Powder, P545, department stores, your finishing touch using a kabuki brush, P600, Suesh.

MATCH MAKER

L'Oreal's True Match Super-Blendable Foundation in natural beige, P995, department stores and supermarkets, blends superbly on skin and wards off UV with SPF 17/PA++. This fragrance and oil-free formula keeps makeup steady and fresh without the hassle of shine, streaking, and creasing.



BLEMISH BUSTERS

Banish blemishes with Ellana's mineral-based Color Correctors, P190 each. Innocence reduces, covers, and even heals acne. Angelic brings a healthy sheen to yellow or sallow skin tones. Order at www.ellanaminerals.com.

Immaculate Complexion

Look all-day fresh and flawless with these budge-proof groundwork essentials.

MINERAL WORKER

Give your skin that smooth and silky finish plus natural sun protection with just a few brushstrokes of Bloom's Pure Mineral Makeup Powder Foundation, P995, Beauty Bar. Comes in three shades—light, medium, and dark. Mineral powder brush, P900 (set of five), Suesh.

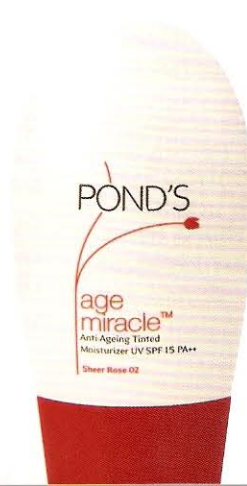


ON-CALL RADIANCE

Fashion 21 Perfect Stick Foundation Concealer, P165, department stores, can cover up dark circles and make them lighter eventually with its built-in UV white protection.

TINT CONDITION

Trust a multi-tasker like Pond's Age Miracle™ Anti-Aging Tinted Moisturizer, P349, Watsons, to efficiently do the job of three: provide matte coverage, protect against sun rays with SPF 15/PA++, and hydrate skin in one spread.



LIQUID LOVE

Maybelline's AngelFit Flawless Natural Liquid Foundation in medium apricot sand, P529, department stores, provides impeccable coverage and improves skin's glow with moisturizing chamomile essence, royal jelly, vitamin E, and white pink pearls.



TENDER TOUCH

Max Factor's Miracle Touch Liquid Illusion Foundation, P895, department stores, applies like powder with the finesse of liquid. Plus, the makeup you put on smoothens even the areas that need levelling out.